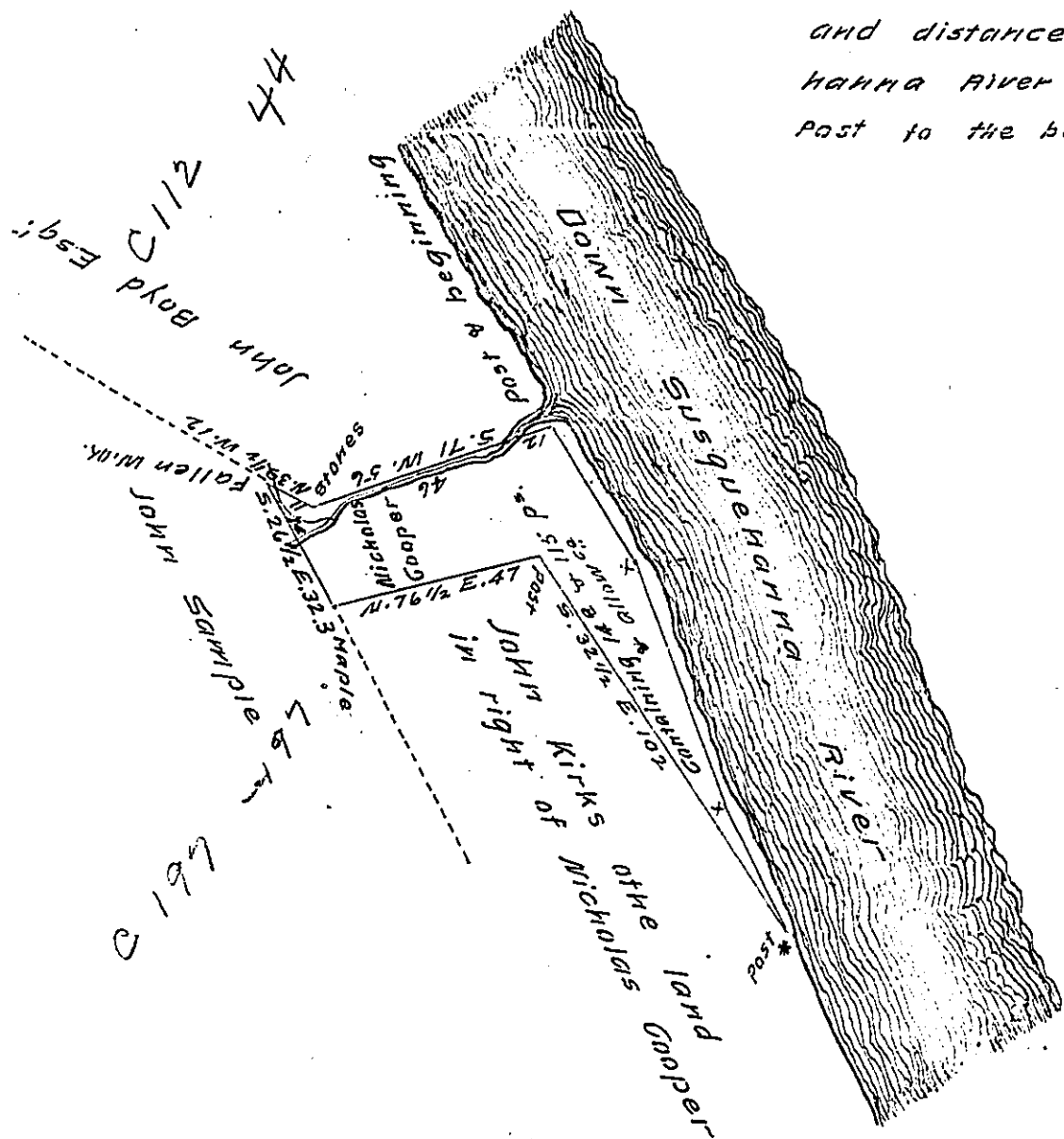


The following are the courses
and distances along up Susque-
hanna River from * marked
Post to the beginning N. 25 1/2 W. 32
N. 19 1/2 W. 58
N. 29 1/2 W. 37.3
Beginning



Situate in Fawn township in the County of York containing
as above set forth 14^a & 115 perches and allowance which
was originally surveyed on the 5th day of September A.D.
1800 for Stephen Cooper in pursuance of a warrant for 20^a
granted to Nicholas Cooper bearing date the 3^d day of October
Anno Domini 1788 And now resurveyed by the old lines on
the 21st day of September Anno Domini 1811 for and at the re-
quest of John Kirk the present owner who desired the same
to be returned for confirmation

per Jacob Spangler D. S.

To Andrew Porter Esq^r }
Surveyor General }
Lancaster Pa }

IN TESTIMONY that the above is a copy of the original remaining on file in
the Department of Internal Affairs of Pennsylvania, made
conformably to an Act of Assembly approved the 16th day of
February, 1833, I have hereunto set my Hand and caused
the Seal of said Department to be affixed at Harrisburg,
this Fourteenth day of March 1908

Henry Houch

Secretary of Internal Affairs.